



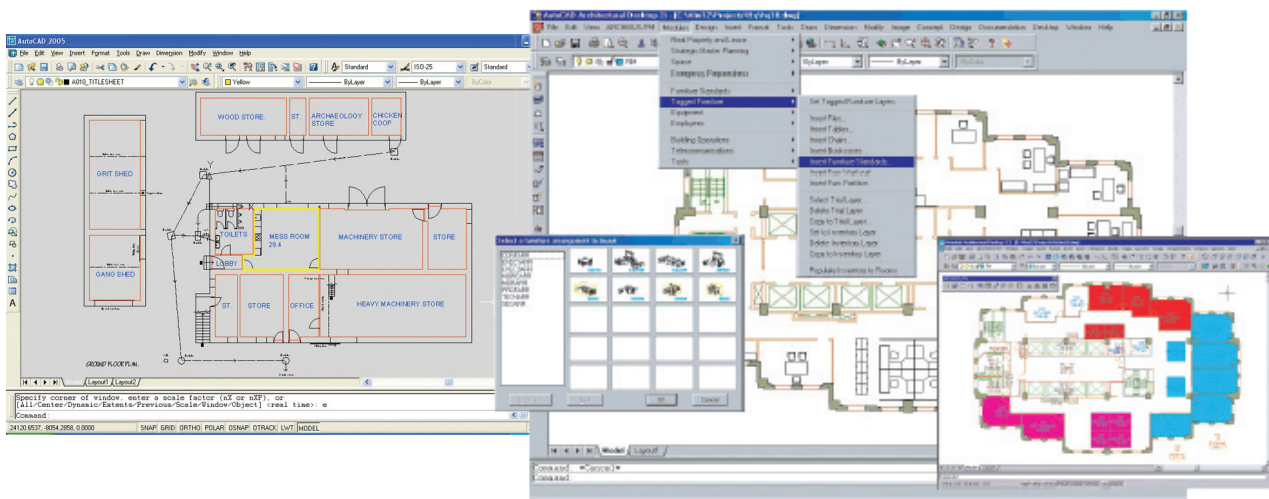
# ArchibusLink™

“A unique interface linking CAD plans with Archibus/FM Software”

Cad-Capture has developed a unique interface ArchibusLink for users of Archibus/FM Facilities Management System who wish to integrate CAD floor plans with the system. ArchibusLink enhances the functionality and usefulness of the system and saves time populating and maintaining databases.

Intelligent CAD files produced using Cad-Capture’s AssetCapture solution are automatically linked so that the information within the Archibus/FM database is related to graphical objects in the drawing such as room area polygons and room text.

Furthermore ArchibusLink seamlessly generates Archibus/FM data transfer files in Excel or XML format so that property records can be populated automatically from the intelligent CAD files with minimal input from the user.



## About Cad-Capture

Cad-Capture provides a complete range of solutions enabling organisations to capture and manage their engineering documents, drawings and data.

The fusion of specialist document conversion and data services with many years experience in systems implementation and application hosting makes it possible for Cad-Capture to provide truly effective solutions.

When considering document, content and data management projects, customers can be confident that Cad-Capture will provide the best available solution.

Founded in 1987, Cad-Capture has evolved as one of the longest established and most experienced companies in its field.

**Autodesk®**  
Authorised Developer